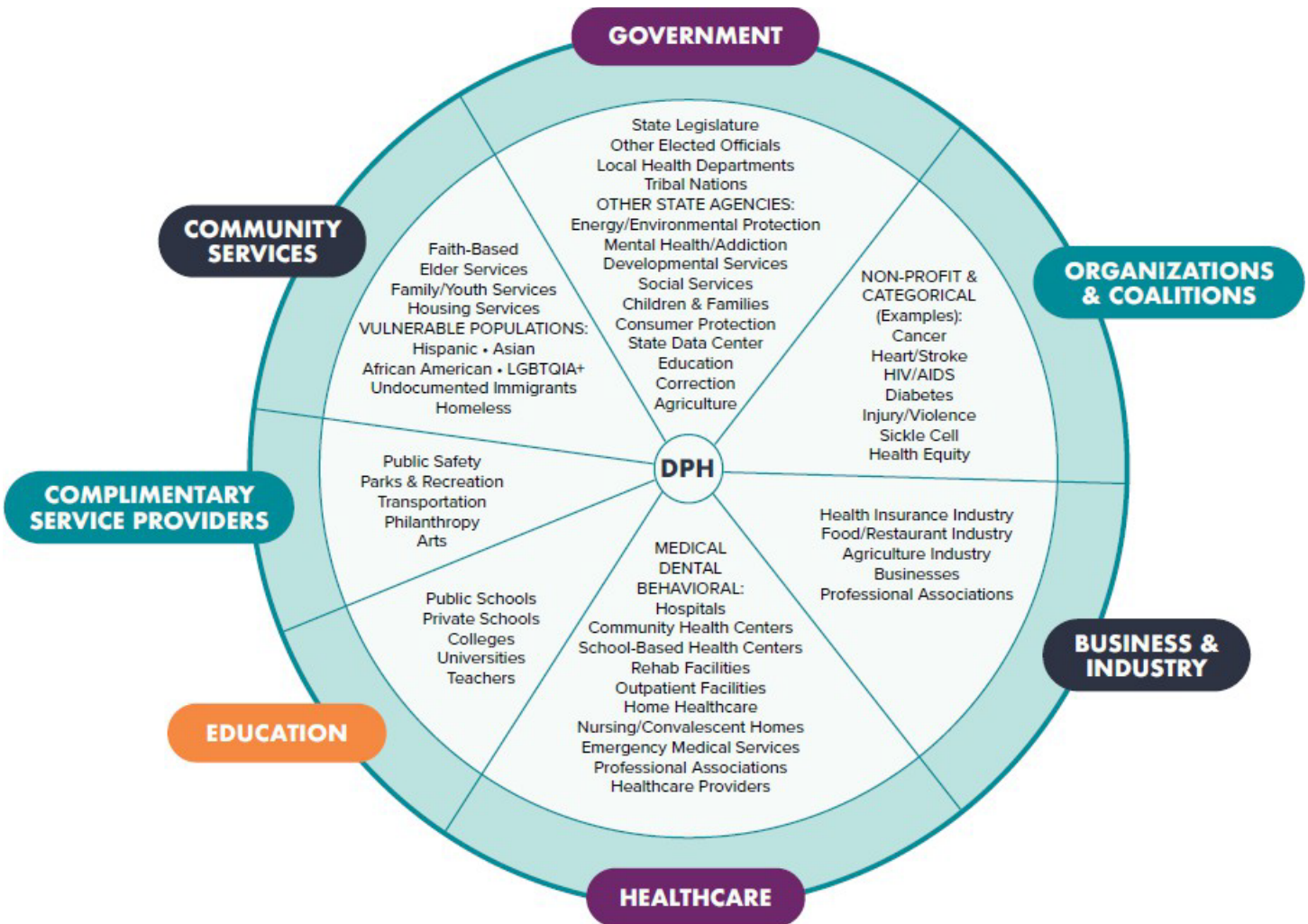


Gaining Buy-In for the MAPP Process: Engaging Key Stakeholders Handout

Stakeholder Wheel

This stakeholder wheel, adapted from the Connecticut Department of Public Health, shows the range of potential sectors and non-traditional stakeholders that can be involved in the public health system. You could create a table for each sector and sub-category and fill in local community organizations, coalitions, and people for each.



Engaging Non-Traditional Stakeholders Small Group Activity

Non-Traditional Stakeholder: _____

What are some of the assets this stakeholder brings to the CHI process?

What do you think their interests would be in engaging in MAPP? How might they already be involved in work related to community health improvement?

What are some strategies you might implement to engage this stakeholder?

What has been your past experience with engaging this stakeholder and what have you learned from this experience?